

2018 FLEETWOOD BOUNDER

BOUNDER

2018 FLEETWOOD
CLASS A GAS



 **FLEETWOOD RV**
REV GROUP

BOUNDER

The Fleetwood Bounder has been connecting families and the great outdoors for more than 30 years. One of the most popular Class A gas motorhomes on the road today, Bounder elevates comfort and convenience to an art form. Sofas with a comfort foam design are perfect for family and guest, while the 35K and 36H feature the popular rear bathroom and half bath. High-end standards, like solid-surface countertops and a home theater sound system make this one of "America's Favorite Motorhomes."

TOP FEATURES

- Solid Surface Tops & Glass Tile Backsplash Throughout Galley
- Solid Surface Tops Throughout Lavy
- Auto Generator Start
- Power Driver Seat
- Recessed Cooktop w/Solid Surface Covers
- Oversized Window(s) in Galley and Living Room
- Stainless Steel Convection Microwave Oven
- Exterior Entertainment Center
- Residential Refrigerator
- IllumaPlex™ Electronics Control System w/App Control

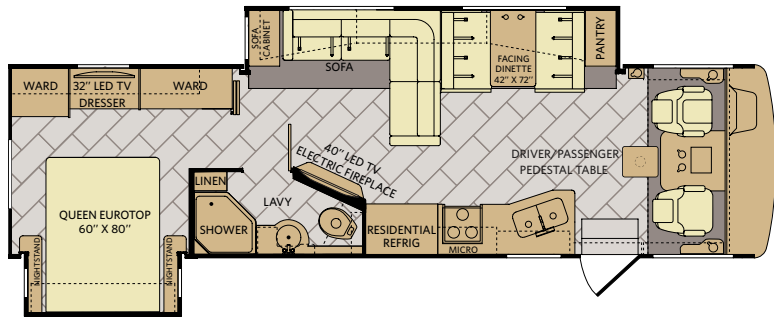


The Bounder 35P is shown in Silver Lining décor and Dark Cherry High Gloss cabinetry.

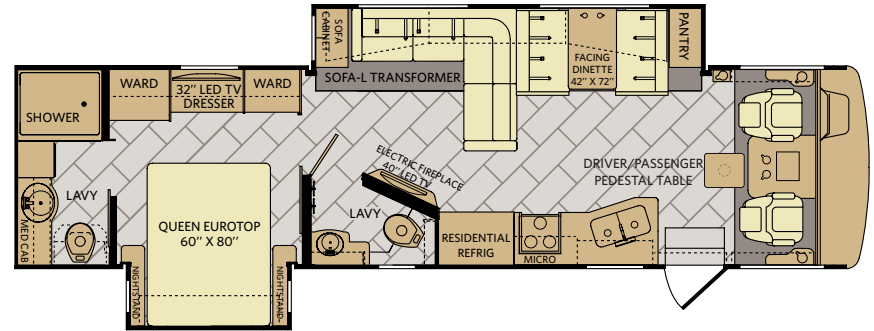


FLOORPLANS & EXTERIOR OPTIONS

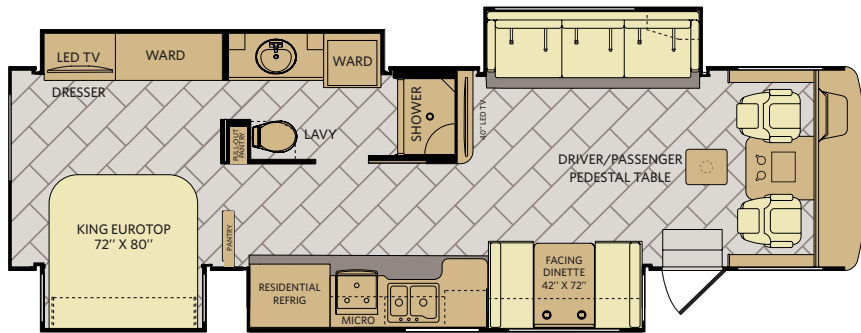
33C Options: 113, 126, 220, 833, 852



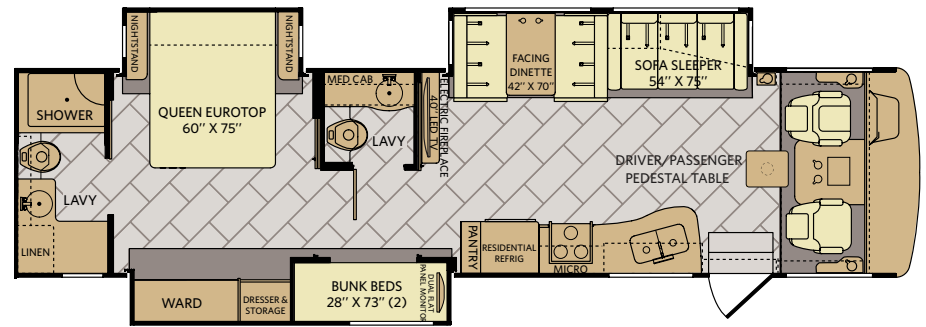
35K Options: 113, 126, 220, 833, 852



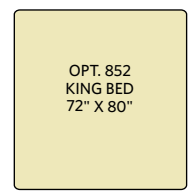
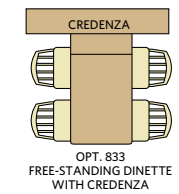
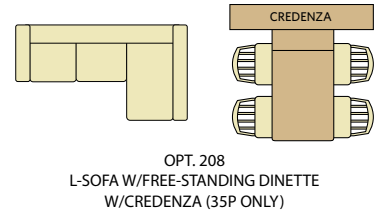
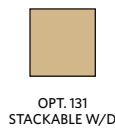
35P Options: 113, 131, 208, 220, 833



36H Options: 113, 126, 220, 833, 852



Available Options



Desert



Freedom



Mirage



DÉCOR OPTIONS

Autumn Wheat High Gloss



Nottingham Cherry High Gloss



Eclectic Bronze



Redwood



Silver Lining



1 Sofa 2 Accent 3 Bedspread 4 Countertop 5 Flooring 6 Carpet

STANDARDS & OPTIONS

INTERIOR THROUGHOUT

- 100-Gallon Fresh Water Holding Tank
- 10-Gallon Quick Recovery Water Heater w/Direct Spark Ignition (Gas/Electric)
- Vinyl Flooring
- 120V/12V AC/DC Converter
- 2,000-Watt Pure Sine Wave Inverter
- Dual 13,500 Btu Roof A/C High Efficiency w/Solar Panel, Chill Grills & Bedroom Heat Pump
- 30,000/20,000 Btu/h Furnace (36H)
- 34,000 Btu/h Furnace (33C, 35K, 35P)
- Auxiliary Batteries w/Disconnect Switch
- Blu-ray® Home Theater Sound System (33C, 35K, 36H)
- Mid TV Sound Bar (35P)
- Deluxe Roller Bearing, Full Extension Drawer Guides & Transit-Ship Locks
- Demand Water Pump w/Filter
- Energy Efficient LED 3" Puck Flush Mount Lighting Throughout
- Energy Management System
- Fabric Window Treatments w/Wood Accents (Living Area)
- Fan-Tastic® Power Roof Vent (Multiple Locations)
- Flat Interior Soft-Touch Vinyl Ceiling w/Ducted Air
- Full HD Video System

- Full-Length, Metallic A/C Ducting
 - Hardwood Crown Molding Throughout at Ceiling
 - Hardwood Raised Panel Cabinet Doors Upper & Lower w/Hidden Hinges
 - IllumaPlex™ Electronic Control System w/App Control
 - Neutral Loss Protection
 - Ozite Lined Shelves
 - Polished Solid-Surface Countertops (Galley & Lavy)
 - Manual Day/Night Double Roller Shades Throughout - Black
 - Raised Panel Doors
 - Satellite Radio Ready
 - Solid Divider Doors
 - Tuff-Pex™ Plumbing System
 - TV Antenna w/Signal Booster
 - Water Heater Bypass Valve
 - Water Pump Switches in Multiple Locations
 - Whole-Coach Water Filtration System
 - Hardwood Drawers
- OPTIONS**
- CSA Package (Canadian Specs)
 - Hide-A-Loft™ P2K™ Drop Down Queen Bed 52" x 72" w/24" LED TV
 - Winegard® Stationary Satellite System
 - King Stationary Satellite System

DRIVER CONVENIENCE

- 110-Volt AC Outlet at Passenger Area
- 12- Volt & USB Accessory Ports
- AM/FM/DVD Touch Screen Radio w/ CD Player, Satellite Radio Ready
- Auto Generator Start Switch
- Auxiliary Emergency Start Assist Switch on Dash
- Battery Disconnect System
- Co-Pilot Integrated Dash Workstation & Large Console Storage Drawer
- Dash Fans
- Driver/Passenger Captain's Chairs w/ Diamond Pattern Lumbar, Contrasting Baseball Stitch, Comfort Fit Foam Design, & Reclining Back/Swivel
- Driver 6-Way Power Controls
- Driver/Passenger Cup Holders, Reading Lights, and Pedestal Table
- Driver/Passenger Power Sun Visors, Power Roller Shade & Manual Day/ Night Black Roller Shades
- Dual Monitor Panel in Dash

- Electronic Cruise Control
 - High Output Dash Heat & Air Conditioning
 - Intense Halogen Projector Headlamps
 - Power Heated Side Vision Mirrors w/ Integrated Turn Signal & Cameras
 - Radio Switch Main/Auxiliary Power
 - Removable Cockpit Floor Mat
 - Seat Belts - 3-Point Driver & Passenger w/Adjustable Straps
 - Soft-Touch Automotive Dash
 - Steering Wheel w/Tilt
 - Windshield Wipers w/Delay
- OPTIONS**
- Premium Radio Upgrade

GALLEY

- Adjustable Cabinet Shelves
- Brushed-Nickel Finish Cabinet Hardware & Faucet
- Convenient Galley Slide-Out Cabinet w/Shelf (Select Floor Plans)
- Deep Double-Bowl Under-Mount Stainless-Steel Sink
- Demand Water Pump

- Large Slide-Out Dinette Drawers w/ Latches - Under Dinette
- Large Galley Window
- Polished Solid Surface Countertops, Sink & Stove Top Covers
- Power Ceiling Vent Fan
- Recessed 3-Burner Cooktop
- Residential Refrigerator w/Platinum Exterior

GALLEY CONTINUED

- Single-Lever Galley Faucet w/Pullout Sprayer
- Sink Cover/Cutting Board
- Stainless Steel Convection Microwave Oven
- Tile Backsplash w/Stainless Accents

- Toe Kick
 - Wastebasket
- OPTIONS**
- 3-Burner Range w/Oven

BEDROOM

- 32" LED HDTV w/Storage Behind
- Bedspread w/Integrated Shams & Accent Pillows
- Designer Headboard
- Dual Flat-Panel Monitors (36H)
- Exclusive Dream Easy Mattress
- Lift Up Bed w/Under Bed Storage
- Reading Lights in Bed Overhead Cabinets

- Rear Speakers
 - Remote Generator Start
 - Slide-Out w/2 Windows
 - USB Port/120V Outlet
- OPTIONS**
- King Bed (33C, 35K, 36H)
 - Washer/Dryer Combo (33C, 35K, 36H)

BATHROOM

- Satin Nickel Towel Bar & Toilet Paper Holders
- Bath Door w/Residential Privacy Lock
- Deluxe Hardwood Medicine Cabinet w/Mirror
- Fiberglass Shower
- Glass Shower Door - Rain Glass
- Hardwood Bath Door/Trims
- Metal Shower Head w/On/Off, Sliding Adjustable Bar, Soap Dish & Matching Dual Valve Faucet
- Residential Brushed Nickel Single Handle Faucet w/Large Sink
- Residential Porcelain Sink

- Residential Water Saver & Vacu-Flush Porcelain Toilet (33C, 35K, 36H)
 - Residential Water Saver & Porcelain Toilet (35P, 36H)
 - Skylight in Shower/Roof Vent w/12V Fan
 - Solid-Surface Countertops w/Solid-Surface Backsplash
 - Toilet Tank San-T-Flush™ System
 - Window Treatment (35K, 36H)
- OPTIONS**
- Stackable Washer/Dryer (35P)

LIVING ROOM

- 40" LED HDTV w/Storage Behind TV (Select Floor Plans)
- Electric Fireplace (33C, 35K, 36H)
- Entry Assist Handle
- Facing Dinette
- Home Theater Sound System (33C, 35K, 36H)
- Mid TV Sound Bar (35P)
- Oversized Windows

- Residential Seat Styling
 - Sofa w/Diamond Pattern Lumbar Contrasting Baseball Stitch & Comfort Foam Design
- OPTIONS**
- Free-Standing Dinette w/Credenza
 - L-Sofa / Free-Standing Dinette w/ Credenza (35P)

SAFETY/CONVENIENCE

- 10-ABC Fire Extinguishers
- Battery Access Entry Step Cover
- Battery Disconnect
- Carbon Monoxide, Propane & Smoke Detector/Alarm
- Egress Windows
- Entry Door Manual Roller Shade

- Exterior & Interior Entry Assist Handle
- GFI Circuit Protection
- Master Light Switch at Entry For All Storage Compartments
- Multiple Seatbelt Locations
- Steel Constructed Entry Step Box w/Rubber Entry Step

EXTERIOR THROUGHOUT

- 4-Color Full-Body Premium Paint
- 5.5 kW Onan® MicroQuiet Generator
- 50-Amp Service
- Fiberglass Wheel Well Skirts
- Antenna - Unidirectional King Controls Jack Antenna
- Automotive Style Soft Dash
- Automotive Style Windshield Wiper System
- Awning - Single Wall Mounted Legless Patio Awning w/LED Lighting & Bump Sensor Retract
- Awning - Slide Out Toppers Above All Slide Outs

- (4) 6V Deep Cycle House Batteries
- Black Instrument Gages w/Electronic Information Center
- Corrosion Resistant Steel Luggage Door Hinges
- Door Side Area Patio Light
- Driver Side Area Patio Light Above Service Center
- Entrance Door - Radius Trimmed Door w/Black Interior & Screen Door, Deadbolt Lock, Frameless Window Rotary Latch, & Exterior Lighted Power Entry Step
- Exterior Service Station - Including

EXTERIOR THROUGHOUT

- Water Pump Switch, Exterior Shower, Black Tank Flush, City Water Hookup
- Exterior Wall Mounted Entertainment Center - w/32" LED TV, AM/FM/CD/DVD Radio
- Drainage Valves
- Fiberglass Aerodynamic Front Cap w/Automotive Head Lighting & Hood Insert
- Fiberglass Rear Cap w/Automotive Lighting & Rear Fill Fuel Tank
- Formed Grille & Air Intake
- Front/Rear LED Clearance & Marker Lighting
- Front/Rear Mud Flaps
- Gravity Water Fill
- Large Lighted Roto-Molded Polyethylene Compartments
- One Piece TPO Domed Roof
- Protective Front Mask
- Prep for Roof-Mounting Satellite Dish
- Remote Power/Heated Mirrors w/

- Turn Signals & Cameras
 - Side-Swing, Insulated Aluminum Luggage Doors w/Single Paddle Latch
 - Solar Electrical Panel Prep
 - Surge Guard Transfer Switch
 - Tinted Slider Driver/Passenger Windows
 - Under-hood Utility Light
 - 12V 3GPM High Capacity Shurflo Water Pump
 - Large Dark Tinted Frameless Dual Pane Windows Throughout
- OPTIONS**
- Rear Ladder
 - Roof Vent Rain Covers

AUTOMOTIVE

- 4-Point Automatic Levelers
- Trailer Hitch w/7-Pin Electrical Hook-Up

LX PACKAGE

- Onan® 7.0kW Generator
- 15,000 Btu/h w/Heat Pump Front A/C
- Power Cord Reel
- Door Side & Front Undercarriage Lighting
- Exterior Chrome Package (Luggage Compartment Handles & Mirrors w/ Side View Cameras)
- Solid Surface Countertops Throughout

SAFETY/CONVENIENCE

- 50 Amp Electrical Service
- Amber Porch Light w/Interior Switch
- Automatic Hydraulic Leveling Jacks
- Automotive Safety Glass
- Color Rear-Vision Camera w/ One-Way Audio
- Daytime Running Lights
- Entry Door w/Screen Door & Deadbolt Lock
- High Mounted Large Taillights

- Hydraulic 4-Wheel Disk Brakes w/ABS
- Lighted Entry Assist Handle
- Power Electric Step
- Radius Tinted Windows
- Under-hood Utility Lights
- Utility Compartment w/Exterior Shower

STORAGE

- Continuous One-Piece Compartment Bulb Seal
- Pass-Through Storage (Select Models)
- Rotocast Molded Storage Boxes

BODY STRUCTURE

- Aluminum Bus-Style Side Swing Luggage Doors
- Basement Storage Lighting w/ Individual Switches and Master Switch Inside Entry
- Corrosion Resistant Aluminum Tube Hull Framing
- Dryseal™ Edge Coating Water-Wicking Wall Edge Coating
- Electric Main/Bedroom Wardrobe/ Kitchen Slide Out Systems
- F-21 Construction & Manufacturing Technology
- Full Coverage Heavy Duty Undercoating
- Heated Fresh Water & Holding Tank Compartments

- Steel Constructed Entry Step Box
- Power Platform® Construction
- Powerframes™ Precision, Welded Aluminum Interlocking Frames
- Powerlock System™ (Interlocking Floors, Walls, & Ceiling)
- Radiused Entry Door
- Raised Space Frame Foundation
- Rotational Molded Easy To Clean Service Compartment
- Solid Bead-Foam Engineered Fit Insulation™
- Vacu-Bond™ Aluminum Framed Sidewalls, Roof and Floor Construction

WEIGHTS & MEASUREMENTS

CHASSIS

MODEL	33C	35K	35P	36H
Wheelbase (inches)	208"	228"	252"	242"
Front GAWR (lbs) ²	8,000	8,000	9,000	9,000
Rear GAWR (lbs) ²	15,000	15,000	15,500	15,500
GCWR (lbs) ³	26,000	26,000	30,000	30,000
Hitch Rating Weight (lbs) [†]	5,000	5,000	5,000	5,000
Tongue Weight (lbs) [†]	500	500	500	500
Fuel Capacity (gal)	80	80	80	80

POWER PLATFORM® CHASSIS

Model: Ford®

Engine: 6.8L Triton V10

Transmission: Ford®, 6-Speed, Automatic w/Overdrive

Alternator: 175 Amp

Torque: 460 lb.-ft. @ 3,000 RPM

Horsepower: 320 HP @ 3,900 RPM

DIMENSIONS AND CAPACITIES

MODEL	33C	35K	35P	36H
Overall Length (inches) ⁴	34' 3"	36' 3"	36' 3"	37' 7"
Overall Height (with A/C)	12' 10"	12' 10"	12' 10"	12' 10"
Overall Width (maximum) ^{5,6}	102"	102"	102"	102"
Interior Height (maximum)	84"	84"	84"	84"
Interior Width (maximum)	96"	96"	96"	96"
Patio Awning Width (feet & inches)	17'	17'	15'	17'
Interior Storage (cu. ft.)	123	126	144	146
Exterior Storage (cu. ft.)	160	180	138	170
Fresh Water Holding Tank (gal)	100	100	100	100
Grey Water Holding Tank (gal)	58	58	46	58
Black Water Holding Tank (gal)	42	42	30	42
Appliance Propane Tank (gal) (WC) ⁷	25	25	25	25
Water Heater Tank (gal)	10	10	10	10

21 REASONS WHY FLEETWOOD IS AMERICA'S FAVORITE

Mile after mile, decade after decade, more families trust Fleetwood. The open road is our proof. With more Fleetwood motorhomes on the road today than any other manufacturer*, our brand prides itself on building dependable products that help families reconnect one journey at a time — over and over again. At Fleetwood, we constantly redefine value because understanding your every need is just the start to delivering peace-of-mind at every turn.

F-21 Advantage: Fleetwood 21st century engineering, manufacturing, and materials

Fleetwood RV offers a 21st century, industry-leading advantage—a quality construction approach to motorhome engineering, manufacturing and materials. The “F” stands for Fleetwood RV. The “21” stands for 21st century materials and construction techniques. F-21 is demonstrated by 21 key proof points that deliver unique advantages to Fleetwood owners and illustrate the quality for which Fleetwood RV is known industry-wide.

*Based on IHS Automotive, Polk Recreational Vehicles in Operation (RVIO) as of 7/1/13.



YOUR LOCAL DEALER

LAMESA REC VAN

LaMesaRV.com
800-496-8778



Fleetwood RV is part of REV Recreation Group, a division of REV Group, Inc., a family of 26 industry-leading motor vehicle brands. At REV Group, we innovate, design and build products that connect and protect thousands of people every day—our trusted vehicles are engineered with the utmost rigor and precision to deliver the highest levels of performance, reliability, durability and safety.

DISCLAIMERS

1. GVWR (Gross Vehicle Weight Rating) is the maximum permissible weight of this fully loaded motor home. The GVWR is equal to or greater than the sum of the (UVW) unloaded vehicle weight plus the (OCCC) occupant cargo-carrying capacity.
 2. GAWR (Gross Axle Weight Rating) is the maximum permissible loaded weight a specific axle is designed to carry.
 3. GCWR (Gross Combined Weight Rating) is the value specified by the motor home manufacturer as the maximum allowable loaded weight of this motor home with its towed vehicle. Towing and braking capacities may be different. Refer to Fleetwood and chassis manufacturer's manuals for complete information.
 4. Length measured from front bumper to rear bumper (excludes accessories).
 5. Excludes safety equipment and awnings.
 6. Motor homes feature a body width over 96" which will restrict your access to certain roads. Before purchasing, you should research any state and/or province road laws which may affect your usage.
 7. Tank manufacturer's listed water capacity (WC). Actual propane capacity is 80% of water listing as required by the safety code.
- † The chassis manufacturer recommends the installation of a supplemental brake control system to activate the brakes on the vehicle or trailer you are towing. Hitch receiver ratings expressed are maximum for the hitch receiver installed and may require the purchase of additional equipment that is dependent on the weight of the towed load. Consult with hitch receiver manufacturer for further information.
- * UVW and OCCC are found on the label containing the federal certification tag in each RV.
- ** Seatbelts and locations are shown in the brochure for display purposes only. Actual numbers and locations will vary by model.
- *** All 2018 REV Recreation Group motorhomes include a limited one year/15,000-mile coach warranty and three-year/45,000-mile structural warranty, whichever occurs first, and is fully transferable for the first 12 months.

FLEETWOOD MOTORHOME ASSOCIATION

As a Fleetwood RV owner, you're invited to become a member of the Fleetwood Motorhome Association (FMA). Becoming a member is the perfect way to meet other Fleetwood owners who love to travel across America and share in the RV lifestyle. Visit the FMA website at www.fma4fun.org to learn more and join the fun.

CONTACT US

To locate a dealer near you, visit our website at www.fleetwoodrv.com or call 1-800-322-8216. We can also be contacted at Fleetwood RV Customer Relations, P.O. Box 1007, Decatur, IN 46733.

IMPORTANT—PLEASE READ: Product information, photography and illustrations included in this publication were as accurate as possible at the time of printing. For further product information and changes, please visit our website at www.fleetwoodrv.com or contact your local Fleetwood RV dealer. Prices, materials, design and specifications are subject to change without notice. All weights, fuel, liquid capacities and dimensions are approximate. Fleetwood RV has designed its recreational vehicles to provide a variety of uses for its customers. Each vehicle features optimal seating, sleeping, storage and fluid capacities. The user is responsible for selecting the proper combination of loads (i.e., occupants, equipment, fluids, cargo, etc.) to ensure that the vehicle's capacities are not exceeded.

www.fleetwoodrv.com

©2017 REV Group, Inc. Printed in the USA. Inventory Control Number BOUNDER18B1, 06/17. Model Year 2018, First Edition.

 **FLEETWOOD RV**

LASTING DEPENDABILITY | FAMILY FAVORITE | FEATURE PACKED

www.fleetwoodrv.com

BOUNDER

2018.5 FLEETWOOD RV CLASS A GAS

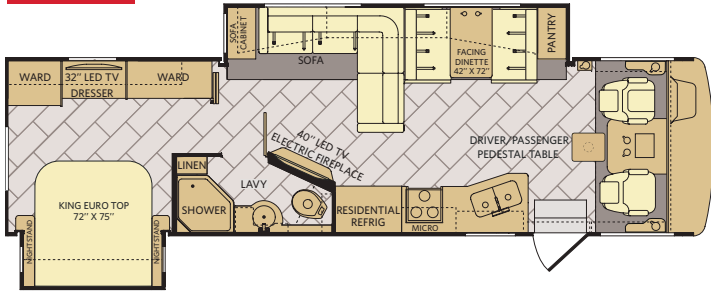


OUR VEHICLES CONNECT AND PROTECT
PEOPLE AROUND THE WORLD EVERYDAY.
www.revgroup.com


Vehicles for life

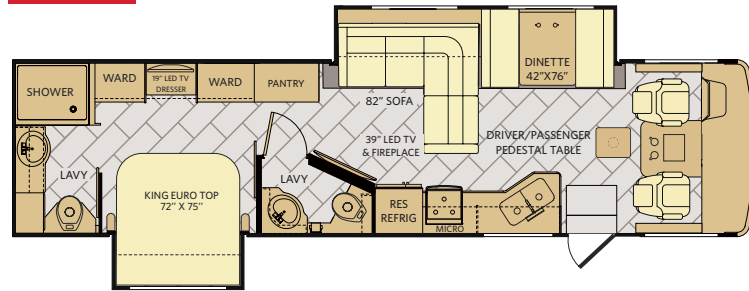
33C

Options: 126, 194, 833



34S

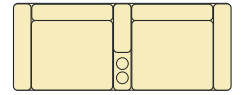
Options: 126, 194, 833



Available Options



OPT. 126
WASHER/DRYER



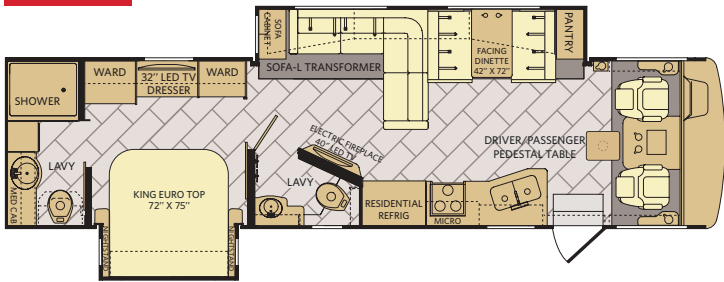
OPT. 194
70" THEATER SEATING



OPT. 833
FREE-STANDING DINETTE
WITH CRENZENZA

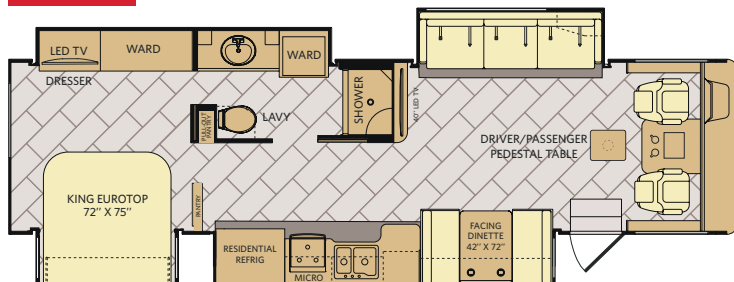
35K

Options: 126, 194, 833



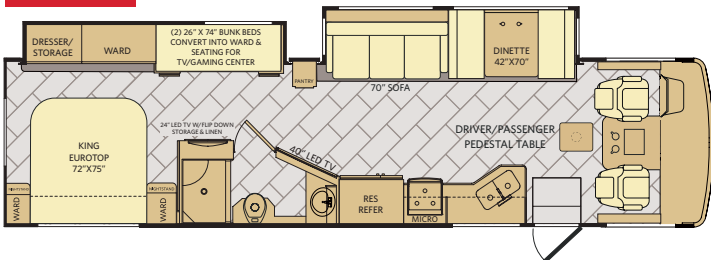
35P

Options: 126, 194, 833



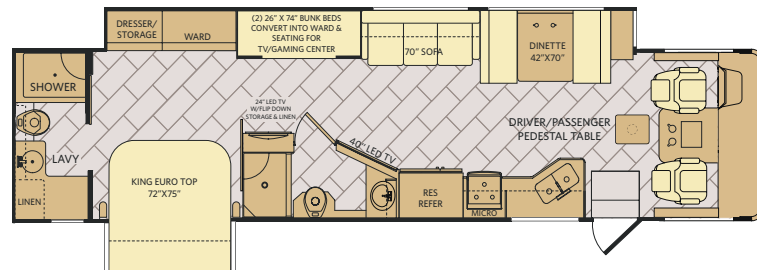
36D

Options: 126, 194, 833



36F

Options: 126, 194, 833



Emporium

Glacier

Shorline



SPICED MOCHA

1

4

2

5

3

6

STERLING SLATE

1

4

2

5

3

6

1 SOFA

2 LIVING ACCENT

3 BEDSPREAD

4 COUNTERTOP

5 FLOORING

6 CARPET



GREYSTONE HIGH GLOSS



NOTTINGHAM CHERRY HIGH GLOSS



AUTUMN WHEAT HIGH GLOSS

CHASSIS

MODEL	33C	34S	35K	35P	36D	36F
Wheelbase (inches)	208"	228"	228"	252"	228"	242"
Front GAWR (lbs) ²	8,000	8,000	8,000	9,000	8,000	8,000
Rear GAWR (lbs) ²	15,000	15,000	15,000	15,500	15,000	15,000
GCWR (lbs) ³	26,000	26,000	26,000	30,000	26,000	26,000
Hitch Rating Weight (lbs) [†]	5,000	8,000	5,000	5,000	8,000	8,000
Tongue Weight (lbs) [†]	500	500	500	500	500	500
Fuel Capacity (gal)	80	80	80	80	80	80

FORD® CHASSIS

Model: Ford

Engine: 6.8L Triton V10

Transmission: Ford 6-Speed Automatic w/Overdrive

Alternator: 175 Amp

Torque: 460 lb.-ft. @ 3,000 RPM

Horsepower: 320 HP @ 3,900 RPM

DIMENSIONS AND CAPACITIES

MODEL	33C	34S	35K	35P	36D	36F
Overall Length (inches) ⁴	34' 3"	36' 3"	36' 3"	36' 3"	36' 3"	38' 9"
Overall Height with A/C	12' 10"	12' 10"	12' 10"	12' 10"	12' 10"	12' 10"
Overall Width (maximum) ^{5,6}	102"	102"	102"	102"	102"	102"
Interior Height (maximum)	84"	84"	84"	84"	84"	84"
Interior Width (maximum)	96"	96"	96"	96"	96"	96"
Patio Awning Width	18'	18'	18'	15'	18'	18'
Interior Storage (cu. ft.)	123	150	126	144	204	171
Exterior Storage (cu. ft.)	160	148	180	138	130	170
Fresh Water Holding Tank (gal)	100	100	100	100	100	100
Grey Water Holding Tank (gal)	58	45	58	46	45	90
Black Water Holding Tank (gal)	42	50	42	30	50	50
Appliance Propane Tank (gal) (WC) ⁷	25	25	25	25	25	25
Water Heater Tank (gal)	10	10	10	10	10	10



DISCLAIMERS

- GVWR (Gross Vehicle Weight Rating) is the maximum permissible weight of this fully loaded motor home. The GVWR is equal to or greater than the sum of the (UVW) unloaded vehicle weight plus the (OCCC) occupant cargo-carrying capacity.
 - GAWR (Gross Axle Weight Rating) is the maximum permissible loaded weight a specific axle is designed to carry.
 - GCWR (Gross Combined Weight Rating) is the value specified by the motor home manufacturer as the maximum allowable loaded weight of this motor home with its towed vehicle. Towing and braking capacities may be different. Refer to Fleetwood and chassis manufacturer's manuals for complete information.
 - Length measured from front bumper to rear bumper (excludes accessories).
 - Excludes safety equipment and awnings.
 - Motor homes feature a body width over 96" which will restrict your access to certain roads. Before purchasing, you should research any state and/or province road laws which may affect your usage.
 - Tank manufacturer's listed water capacity (WC). Actual propane capacity is 80% of water listing as required by the safety code.
- † The chassis manufacturer recommends the installation of a supplemental brake control system to activate the brakes on the vehicle or trailer you are towing. Hitch receiver ratings expressed are maximum for the hitch receiver installed and may require the purchase of additional equipment that is dependent on the weight of the towed load. Consult with hitch receiver manufacturer for further information.
- * UVW and OCCC are found on the label containing the federal certification tag in each RV.
- ** Seatbelts and locations are shown in the brochure for display purposes only. Actual numbers and locations will vary by model.
- *** All 2018 REV Recreation Group motorhomes include a limited one year/15,000-mile coach warranty and three-year/45,000-mile structural warranty, whichever occurs first, and is fully transferable for the first 12 months.

FLEETWOOD MOTORHOME ASSOCIATION

As a Fleetwood RV owner, you're invited to become a member of the Fleetwood Motorhome Association (FMA). Becoming a member is the perfect way to meet other Fleetwood owners who love to travel across America and share in the RV lifestyle. Visit the FMA website at www.fma4fun.org to learn more and join the fun.

CONTACT US

To locate a dealer near you, visit our website at www.fleetwoodrv.com or call 1-800-322-8216. We can also be contacted at Fleetwood RV Customer Relations, P.O. Box 1007, Decatur, IN 46733.

IMPORTANT—PLEASE READ: Product information, photography and illustrations included in this publication were as accurate as possible at the time of printing. For further product information and changes, please visit our website at www.fleetwoodrv.com or contact your local Fleetwood RV dealer. Prices, materials, design and specifications are subject to change without notice. All weights, fuel, liquid capacities and dimensions are approximate. Fleetwood RV has designed its recreational vehicles to provide a variety of uses for its customers. Each vehicle features optimal seating, sleeping, storage and fluid capacities. The user is responsible for selecting the proper combination of loads (i.e., occupants, equipment, fluids, cargo, etc.) to ensure that the vehicle's capacities are not exceeded.

www.fleetwoodrv.com

©2017 REV Group, Inc. Printed in the USA. Inventory Control Number BNDRI8F1, 010/17. Model Year 2018.5, First Edition.



LaMesaRV.com
800-496-8778